

# RIVERLEA ENVIRONMENT SOCIETY INC.

## NEWSLETTER



## WELCOME

*Welcome to the first issue of the newsletter of the Riverlea Environment Society Inc. It has been delivered free to all of the Riverlea and Berkeley areas of Hillcrest, and the Newell Road area. In this introductory issue we will introduce you to the Society and its activities to date.*

*Most readers will be particularly interested in the latest news on Blacktop Construction Ltd's application for resource consent to manufacture hot mix asphalt on Riverlea Road, in particular, to discharge contaminants to the air.*

*Thank you to everyone who made a submission on this application. For those who ticked that they wish to be heard in support of their submission, we will provide information in future issues of this newsletter and on our website [www.resi.org.nz](http://www.resi.org.nz) on how best to prepare for the Environment Waikato hearing.*

*In order to demonstrate our community's commitment to preserving our environment, it is important that the Riverlea Environment Society has as many members as possible. We have been delighted with the response and support to date.*

*The back page of this newsletter has a membership form. If you have already joined, please encourage your neighbours and other concerned residents to join too. The possibility of an asphalt plant in our neighbourhood demands a concerted and sustained effort. Please note that future issues of this newsletter will go to members only.*

*We are committed to doing the best for this community.*

*Kind regards from the Committee of the Riverlea Environment Society Inc.*



This is the plant which Blacktop Construction Ltd propose to relocate to Riverlea Road

# ENVIRONMENT WAIKATO (EW) SUBMISSIONS

A total of 529 submissions were received by EW. Of these 521 were opposed to the resource consent, five supported the plant and three were neutral.

Submissions were received from a wide range of sources including submissions from the strategic planning unit of the Hamilton City Council, the Waikato District Health Board and the Waikato Raupatu Trustee Company Ltd (the iwi authority of Waikato-Tainui). The Waikato District Health Board had Blacktop’s application reviewed by an independent air quality consultant and made a submission opposing the application.

About half of all submissions were from people who indicated that they wished to be heard at the hearing. The top fourteen issues expressed in submissions that opposed the consent were:

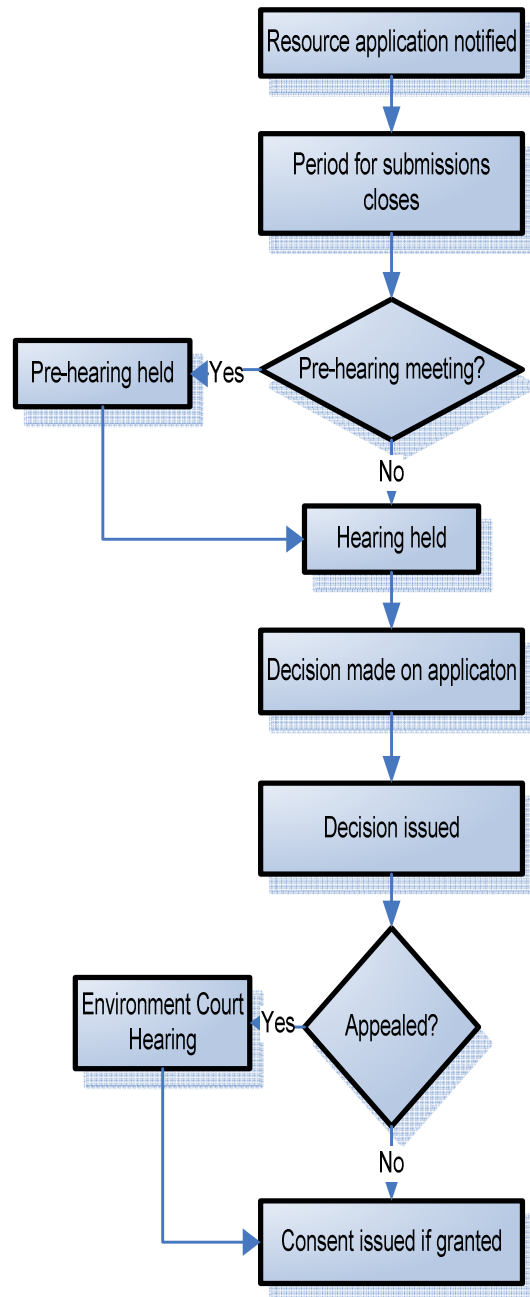
- proximity of the proposed plant to residents, schools and shops
- air pollution
- increased traffic levels affecting noise, dust, air quality and safety
- odour
- noise, particularly during extended hours of operation
- health effects
- local ecology, specifically the gully systems and the long-tailed bat
- contamination of water entering the Waikato River
- property values
- dust and particulate matter
- the proposed hours of operation
- the lack of consideration of local topography and weather
- loss of visual and recreational amenity
- roof water contamination



**Threatened Species**

The native long-tailed bat lives in Hammond Park and the adjacent Mangaonua Gully.

Diagram of the Resource Consent Process



**The Next Stage—The Hearing**

Environment Waikato will hold a hearing which is unlikely to take place before the end of this year. There are likely to be three ‘judges’ at the hearing – either councillors from other regional Councils, or independent commissioners, possibly from outside the region. The Society will be working to support members who intend to speak at the hearing.

Following the hearing, the decision on Blacktop’s application will be announced as accepted, declined or accepted with conditions attached. Any party can then appeal the decision through the Environment Court if they feel the decision is unsatisfactory.

Although the Environment Court emphasises the avoidance of delay in its procedures, it usually takes some months to explore options such as mediated solutions and to prepare for a hearing. While it is hoped that we do not have to place an appeal before the Environment Court, the Society is prepared for an appeal, if that is the route we need to take.

## THE SOCIETY

The Riverlea Environment Society was formed in early October 2007 by a group of concerned residents who contribute their time on a voluntary basis. The formation of an incorporated society provides a central point to coordinate activities including opposition to the asphalt plant. The Committee officers are:

**Chair:** Professor Alister Jones, Howell Ave

**Deputy Chair:** Dr Stephen Hamilton, Chesterman Rd

**Treasurer:** Mr Ken Chandler, Newell Rd

**Secretary:** Dr Andrea Graves, Hudson St

**Spokespeople:** Professor Giselle Byrnes and Dr Stephen Hamilton, Chesterman Rd

The officers of the Society are supported by eleven committee members.

The committee has also established working parties on topics such as communications and publicity, health, and environmental and information technology.

Please contact the Society if you would like to become involved in any of the working parties or Society's activities. The committee currently meets on a fortnightly basis. If you would like to attend a committee meeting, please contact the Society for details.

## ACTIVITIES TO DATE

The wide range of skills and knowledge in the area was invaluable in the preparation of the Society's submission opposing the plant. The society's submission was a comprehensive assessment of the likely impacts of degraded air quality from the proposed plant. The submission pointed out that the application is contrary to the purpose and principles of the Resource Management Act. Society members can obtain a copy of the submission by emailing [riverlea.soc@gmail.com](mailto:riverlea.soc@gmail.com).

### *Publicity*

There have been a number of articles in the *Waikato Times* and free local newspapers discussing the strong community opposition to the proposed asphalt plant. The Riverlea Theatre public meeting on 11 October attracted over 300 people. The Society intends to continue to maintain public awareness of the proposed asphalt plant. A website is being constructed and can be visited at [www.resi.org.nz](http://www.resi.org.nz).

### *Peacocks Road Plan*

In keeping with our goal to protect the environment, the Society lodged a submission in mid-October to the Hamilton City Council on the Peacocks Growth Cell. The submission suggested alterations to the proposed variation on the district plan that would enhance the ecological value of Hammond Park and the environs of the river. Members can obtain a copy of the submission by emailing the Society at [riverlea.soc@gmail.com](mailto:riverlea.soc@gmail.com).

## EXPERT PLANNER

The Society has engaged Graeme Lawrence of Lawrence Cross and Chapman (LCC). LCC are a planning and resource management consultancy firm. ([www.lcc-planning.co.nz](http://www.lcc-planning.co.nz)). Graeme has over 25 years experience in planning and resource management working for project developers, community groups, and local government. He acted for the Kawhia Harbour Protection Society, which won an Environment Court case against rural subdivisions in a superb rural landscape. Graeme is also Honorary Lecturer in Geography at the University of Waikato and is a Director of the Environmental Defence Society Inc ([www.eds.org.nz](http://www.eds.org.nz)).

The Society has been delighted with Graeme's assistance to date, and intends to continue to engage his services as we work towards the Environment Waikato hearing. Graeme also coordinated and wrote the Society's submission to Environment Waikato.

## FUNDS

As outlined at the first meeting at the Riverlea Theatre, it only takes a small donation from each household to build up tens of thousands of dollars. To date, the Society has received significant membership subscriptions and donations from both residential and commercial residents. Our costs to date include incorporation of the society, photocopying and planner's fees.

In addition to subscriptions and donations, the Society has also received pledges. These will only be used to form the legal fund if an appeal is taken to the Environment Court. Although the Society hopes an appeal will not be necessary, it is prudent to ensure that the funds will be available.

The Society accounts will be audited and operated within legal and best practice requirements.



# SUPPORT LOCAL BUSINESSES

Although the Society opposes Blacktop Construction Ltd's resource consent, we support the existing businesses on Riverlea Road. The businesses supplying services include:

- Acorn ITM Building Centre
- Aria Farm
- Auto & Marine Trimming World
- Barry & Sullivan Electrical Ltd
- Bendon Outlet
- Bio International Ltd
- Caravan & Motorhome World
- City Glass
- Civil Contractors Ltd
- Concept Kitchens & Bathrooms
- Cube Innovations
- Dart Developments Ltd
- Dave Metcalfe Panelbeaters
- Directions School of Dance
- Earthwise Direct
- Falling For You Tree Services
- Hillcrest Auto Services
- Kea Trailers
- King Drilling Company Ltd
- King Sitemix Ltd
- Kitchen Culture
- La Cave
- Livestock Improvement
- Lotus Windows Ltd
- Miracle Toys
- Osborne Building Ltd
- PFS Engineering Ltd
- Red Shed Storage
- Ricky Suttor Car Painters
- Riverlea Panelbeaters
- Riverlea Self-Storage
- Riverlea Theatre
- Ruakura Motors and Tractor Parts
- Treescape Waikato
- Waikato Bedding Ltd
- Waikato Building Removals
- Waikato Readymix Concrete
- Wood Effects 2004



A tui seen feeding in Hammond Park this spring

---

## Application for Membership



**Riverlea  
Environment  
Society Inc.**

44 Chesterman Road  
Hamilton 3216

Phone: 07-856-8355  
E-mail: riverlea.soc@gmail.com

I/We hereby apply for membership of the Riverlea Environment Society Inc.

\_\_\_\_\_  
Name(s)

\_\_\_\_\_  
Address

\_\_\_\_\_  
Phone

\_\_\_\_\_  
Email (please only complete if we can contact you by email)

\_\_\_\_\_  
Signature

- Membership Subscription                      \$20.00  
 Additional Donation                                      \$

Total: \_\_\_\_\_

I am prepared to pledge a donation of up to \$..... later if required

Tick this box if you DO NOT wish to receive further information from the Riverlea Environment Society

**JOIN THE  
RIVERLEA  
ENVIRONMENT  
SOCIETY INC.**

[www.resi.org.nz](http://www.resi.org.nz)

*Thanks to John Walker Printers for publishing our newsletter*